

TYPICAL TEST RESULT

IMPACT L_nTW = 54dB

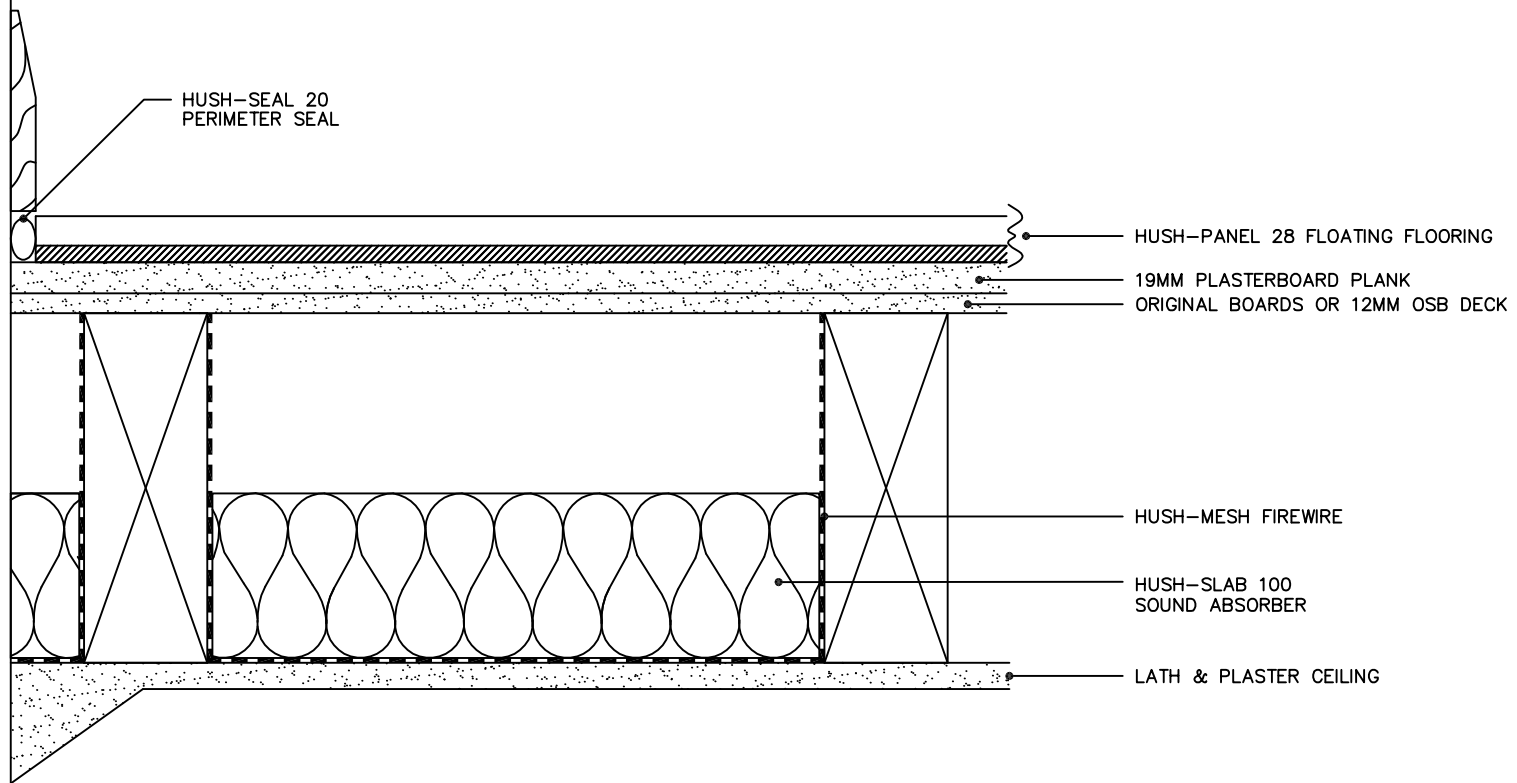
AIRBORNE D_nTW = 58dB

D_nTW + CTR = 50dB

HUSH-PANEL 28, ALL TEEGEE JOINTS GLUED USING HUSH-BOND, LAID OVER 19MM PLASTERBOARD PLANK, LAID OVER EXSISTING FLOORBOARDS/OSB DECK, WITH ALL PERIMETERS SEALED USING HUSH-SEAL 20.

HUSH-MESH FIREWIRE DRESSED DOWN THE SIDES OF THE JOISTS AND ACROSS THE BACK OF THE CEILING IN THE FORM OF TRAYS.

HUSH-SLAB 100 FITTED BETWEEN THE JOISTS RESTING ON THE FIREWIRE TRAY. PROVIDES A 1 HOUR FIRE RESISTANCE AT CEILING LEVEL.



HUSH (UK) LTD
HUSH-SYSTEM LP
TYPE HD1030